



19 Tern Crescent, Chichester PO20 2EP

£146,250 Leasehold



2 Bedrooms



1 Bathroom



1 Reception Room

*Sw*  
Sims Williams



## Key Features

- 45% Shared Ownership
- Middle Terrace House
- Stylishly Presented
- Contemporary Kitchen
- Sitting/Dining Room
- 2 Double Bedrooms
- Bathroom
- Enclosed Rear Garden
- 2 Parking Spaces

## EPC Rating

Current = B

Potential = A

## Council Tax Band

Band = C

## Tenure - Leasehold

Length of Lease: 999 years

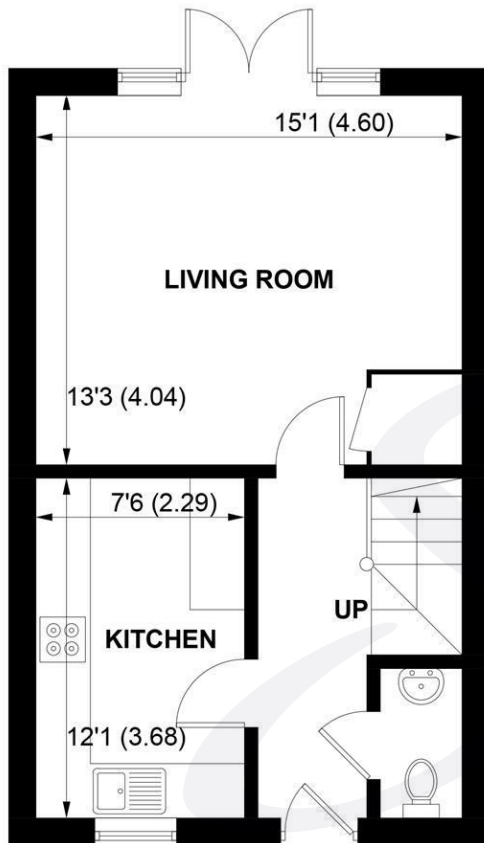
Years Remaining: 992 years

Ground Rent: £250.00 pa

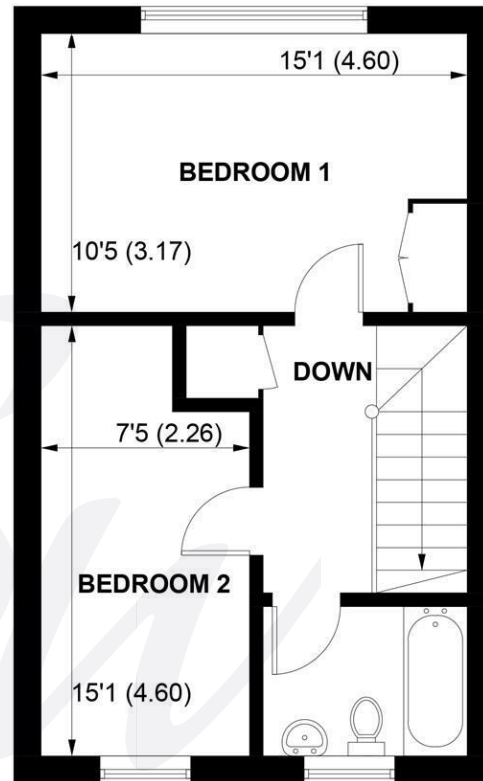
Service Charge: £606.12 pa

Monthly Rent £535.97 pcm





**GROUND FLOOR**



**FIRST FLOOR**

**APPROXIMATE GROSS INTERNAL AREA = 813 SQ FT / 75.5 SQ M**

**NOT TO SCALE (For illustrative purposes only as defined by RICS Code of Measuring Practice) 2023 ©**

**Produced for Sims Williams**



[simswilliams.co.uk](http://simswilliams.co.uk)

#### CHICHESTER

---

8-9 Southgate

Sales 01243 787868

Lettings 01243 836055

[chichester@simswilliams.co.uk](mailto:chichester@simswilliams.co.uk)

#### WALBERTON

---

5 Maple Parade

Sales 01243 551368

Lettings 01243 836055

[walberton@simswilliams.co.uk](mailto:walberton@simswilliams.co.uk)

#### ARUNDEL

---

8a High Street

Sales 01903 885678

Lettings 01903 881133

[arundel@simswilliams.co.uk](mailto:arundel@simswilliams.co.uk)

#### BOGNOR REGIS

---

46 High Street

Sales 01243 862626

Lettings 01243 836055

[bognor-regis@simswilliams.co.uk](mailto:bognor-regis@simswilliams.co.uk)

Viewing Strictly by arrangement via the vendor's agent Sims Williams 01243 787868. These particulars are believed to be correct but their accuracy is not guaranteed and they do not form part of any contract.